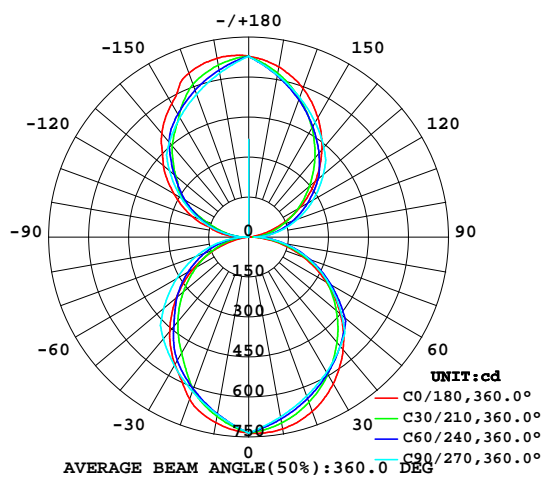


LUMINAIRE PHOTOMETRIC TEST REPORT

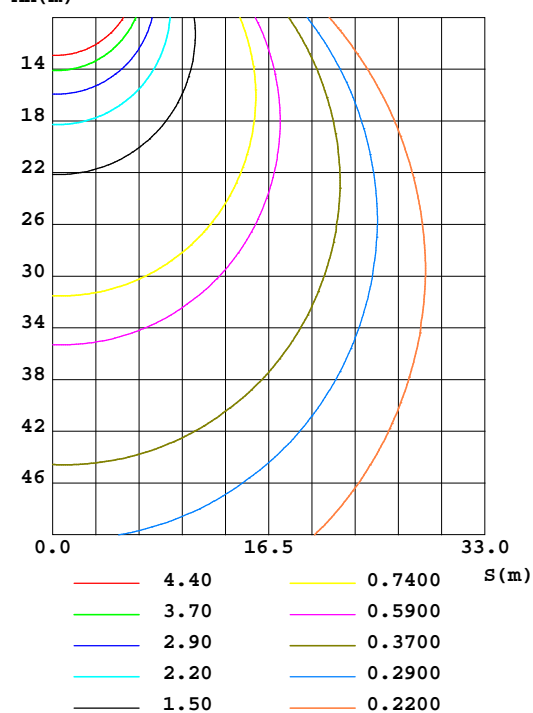
Test:U:121.4V I:0.2470A P:29.50W PF:0.9830 Lamp Flux:3724.42x1 lm		
NAME: 二代线条灯	TYPE: 白色外壳	WEIGHT:
DIM.: 4FT	SPEC.: 4000K	SERIAL No.: 认证样品
MFR.: YQ	SUR.: 1.2*0.066m	PROTECTION ANGLE:

DATA OF LAMP		PHOTOMETRIC DATA Eff: 126.25 lm/W			
MODEL		I _{max} (cd)	736.9	S/MH(C0/180)	1.28
NOMINAL POWER(W)	30	LOR(%)	100.0	S/MH(C90/270)	1.20
RATED VOLTAGE(V)	122	TOTAL FLUX(lm)	3724.4	η UP,DN(C0-180)	23.2,27.2
NOMINAL FLUX(lm)	3724.42	CIE CLASS	DIFFUSE	η UP,DN(C180-360)	23.8,25.8
LAMPS INSIDE	1	η up(%)	47.0	CIBSE SHR NOM	1.25
TEST VOLTAGE(V)	121.4	η down(%)	53.0	CIBSE SHR MAX	1.35

LUMINOUS INTENSITY DISTRIBUTION DIAGRAM



C0 PLANE ISOLUX DIAGRAM (UNIT:lx)



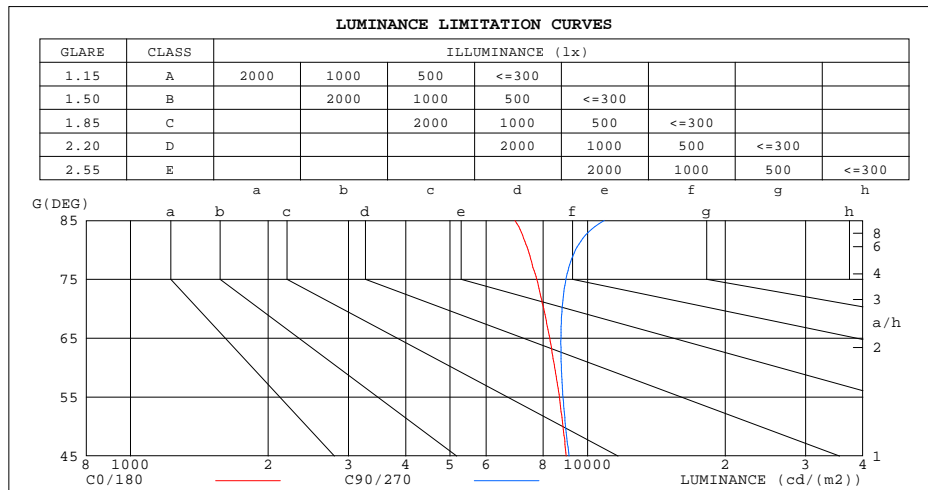
C Range: 0 - 360DEG
 C Interval: 5.0DEG
 Test Speed: HIGH
 Temperature: 26.3DEG
 Operators: Ethan
 Test Date: 2021-10-07

γ Range: 0 - 180DEG
 γ Interval: 0.5DEG
 Test System: EVERFINE GO-2000B_V1 SYSTEM V2.0.268
 Humidity: 36%
 Test Distance: 6.770m [K=1.0000]
 Remarks: E款 5:5
 源磊A+档

ZONAL FLUX DIAGRAM
AND LUMINANCE LIMITATION CURVES

ZONAL FLUX DIAGRAM:

γ	C0	C45	C90	C135	C180	C225	C270	C315	γ	ϕ zone	ϕ total	ϕ lum, lamp
5	736.7	719.2	710.1	710.7	724.7	707.3	705.5	716.0	0- 5	17.27	17.27	0.46,0.46
10	731.1	700.3	685.1	683.8	707.6	677.0	675.8	694.1	5- 10	50.29	67.56	1.81,1.81
15	717.4	677.2	660.1	653.8	683.8	643.4	646.2	668.2	10- 15	80.52	148.1	3.98,3.98
20	696.6	651.3	635.1	620.8	648.2	607.3	616.6	639.7	15- 20	107.2	255.3	6.85,6.85
25	669.2	621.9	610.2	578.3	595.3	559.9	587.0	608.1	20- 25	129.5	384.8	10.3,10.3
30	634.9	591.2	585.2	530.5	552.9	505.4	557.4	575.5	25- 30	147.0	531.8	14.3,14.3
35	595.3	558.0	560.2	487.4	509.5	459.2	527.8	540.7	30- 35	160.3	692.1	18.6,18.6
40	550.5	523.6	535.2	448.8	461.1	417.8	498.2	505.1	35- 40	169.1	861.1	23.1,23.1
45	503.2	488.8	510.2	413.0	409.0	378.1	468.6	468.8	40- 45	173.3	1034	27.8,27.8
50	449.9	453.4	455.8	375.7	354.2	338.5	416.6	432.8	45- 50	172.1	1207	32.4,32.4
55	394.2	417.6	401.4	337.2	298.3	298.9	364.6	396.0	50- 55	164.0	1371	36.8,36.8
60	335.8	356.4	347.0	280.4	241.6	251.0	312.6	337.0	55- 60	150.4	1521	40.8,40.8
65	276.7	296.7	292.6	227.6	184.9	205.4	260.6	279.2	60- 65	132.5	1653	44.4,44.4
70	217.3	238.3	238.3	177.1	129.5	162.2	208.6	222.9	65- 70	111.4	1765	47.4,47.4
75	158.8	182.0	183.9	128.8	75.26	121.4	156.6	168.1	70- 75	88.12	1853	49.8,49.8
80	101.9	127.2	129.5	83.82	25.80	82.84	104.6	114.5	75- 80	63.84	1917	51.5,51.5
85	47.90	73.49	75.05	41.55	2.222	45.77	52.56	61.80	80- 85	39.70	1957	52.5,52.5
90	5.390	20.64	20.66	0.5505	10.37	9.567	0.5599	9.583	85- 90	16.80	1973	53.53
95	0.7921	52.78	63.82	44.77	76.04	53.02	48.97	44.43	90- 95	15.50	1989	53.4,53.4
100	23.12	85.78	107.0	89.24	121.7	95.52	97.39	80.11	95-100	35.05	2024	54.3,54.3
105	69.36	120.2	150.1	134.1	160.8	136.9	145.8	117.4	100-105	55.65	2080	55.8,55.8
110	117.6	156.6	193.3	179.6	225.0	181.0	194.2	156.9	105-110	76.66	2156	57.9,57.9
115	168.4	195.4	236.5	226.6	274.4	229.4	242.6	199.2	110-115	96.82	2253	60.5,60.5
120	220.9	236.3	279.6	274.0	323.1	276.3	291.0	244.3	115-120	115.1	2368	63.6,63.6
125	273.7	279.9	322.8	319.3	372.5	331.0	339.5	292.4	120-125	130.8	2499	67.1,67.1
130	326.4	317.5	366.0	354.2	417.6	368.9	387.9	330.0	125-130	142.9	2642	70.9,70.9
135	378.2	355.7	409.1	390.9	459.2	403.0	436.3	367.5	130-135	150.5	2792	75.75
140	427.4	395.2	439.0	425.4	507.5	436.9	463.3	406.3	135-140	152.9	2945	79.1,79.1
145	474.6	434.3	468.9	465.3	545.8	476.9	490.3	444.9	140-145	150.5	3096	83.1,83.1
150	518.7	473.9	498.7	503.9	577.6	522.6	517.3	483.2	145-150	143.9	3240	87.87
155	559.5	512.7	528.6	547.4	620.0	568.7	544.3	520.6	150-155	133.1	3373	90.6,90.6
160	594.9	549.6	558.5	587.0	655.0	597.7	571.2	556.3	155-160	117.9	3491	93.7,93.7
165	624.3	585.5	588.3	614.8	672.0	623.0	598.2	590.4	160-165	97.90	3589	96.4,96.4
170	648.9	618.3	618.2	639.0	682.0	645.1	625.2	622.6	165-170	73.75	3662	98.3,98.3
175	666.9	649.6	648.0	661.1	683.6	664.3	652.2	652.4	170-175	46.23	3709	99.6,99.6
180	677.9	677.9	677.9	677.9	679.2	679.2	679.2	679.2	175-180	15.92	3724	100,100
DEG	LUMINOUS INTENSITY:cd									UNIT:lm		



LUMINANCE cd/(m2)		
G(°)	C0/180	C90/270
85	6940	10873
80	7409	9413
75	7746	8969
70	8020	8795
65	8268	8743
60	8479	8764
55	8679	8837
50	8837	8954
45	8985	9111

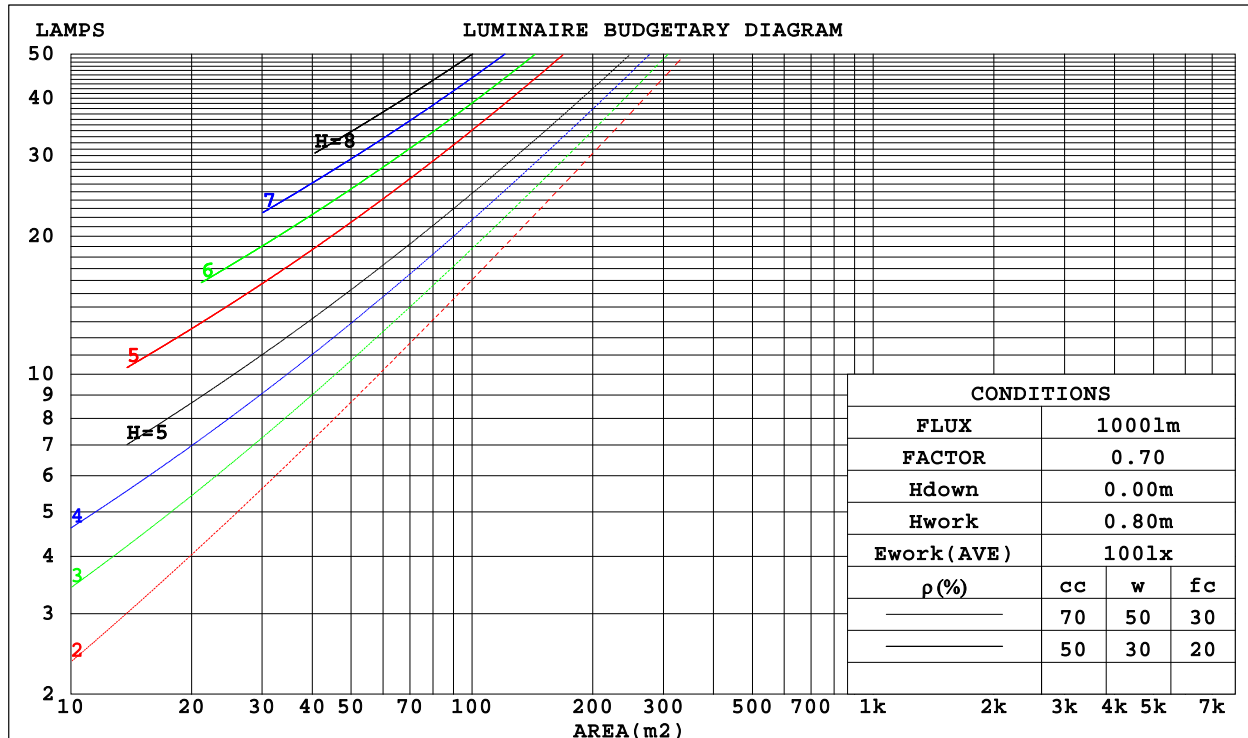
C Range: 0 - 360DEG
C Interval: 5.0DEG
Test Speed: HIGH
Temperature: 26.3DEG
Operators: Ethan
Test Date: 2021-10-07

γ Range: 0 - 180DEG
 γ Interval: 0.5DEG
Test System: EVERFINE GO-2000B_V1 SYSTEM V2.0.268
Humidity: 36%
Test Distance: 6.770m [K=1.0000]
Remarks: E款 5:5
源磊A+档

CU AND LUMINAIRE BUDGETARY ESTIMATE DIAGRAM

Test:U:121.4V I:0.2470A P:29.50W PF:0.9830 Lamp Flux:3724.42x1 lm		
NAME: 二代线条灯	TYPE:白色外壳	WEIGHT:
DIM.: 4FT	SPEC.:4000K	SERIAL No.:认证样品
MFR.: YQ	SUR.:1.2*0.066m	PROTECTION ANGLE:

ρ_{cc}	80%			70%			50%			30%			10%			0
ρ_w	50%	30%	10%	50%	30%	10%	50%	30%	10%	50%	30%	10%	50%	30%	10%	0
ρ_{fc}	20%			20%			20%			20%			20%			0
RCR	RCR:Room Cavity Ratio						Coefficients of Utilization(CU)									
0.0	1.08	1.08	1.08	.00	.00	.00	.85	.85	.85	.71	.71	.71	.59	.59	.59	.53
1.0	.94	.89	.86	.87	.83	.80	.74	.71	.69	.62	.60	.59	.51	.50	.49	.44
2.0	.81	.75	.70	.75	.70	.65	.64	.60	.57	.54	.51	.49	.45	.43	.41	.36
3.0	.71	.64	.58	.66	.60	.54	.57	.52	.47	.48	.44	.41	.40	.37	.34	.30
4.0	.63	.55	.49	.59	.51	.46	.50	.45	.40	.42	.38	.35	.35	.32	.29	.26
5.0	.56	.48	.42	.52	.45	.39	.45	.39	.35	.38	.34	.30	.32	.28	.26	.22
6.0	.50	.42	.36	.47	.39	.34	.40	.34	.30	.34	.30	.26	.29	.25	.22	.20
7.0	.45	.37	.32	.42	.35	.30	.37	.31	.26	.31	.27	.23	.26	.23	.20	.17
8.0	.41	.33	.28	.38	.31	.26	.33	.28	.23	.29	.24	.21	.24	.20	.18	.15
9.0	.38	.30	.25	.35	.28	.24	.31	.25	.21	.26	.22	.18	.22	.19	.16	.14
10.0	.34	.27	.22	.32	.26	.21	.28	.23	.19	.24	.20	.17	.21	.17	.15	.13



C Range: 0 - 360DEG
 C Interval: 5.0DEG
 Test Speed: HIGH
 Temperature:26.3DEG
 Operators:Ethan
 Test Date:2021-10-07

γ Range: 0 - 180DEG
 γ Interval: 0.5DEG
 Test System:EVERFINE GO-2000B_V1 SYSTEM V2.0.268
 Humidity:36%
 Test Distance:6.770m [K=1.0000]
 Remarks: E款 5:5
 源磊A+档

WEC AND CCEC

Test:U:121.4V I:0.2470A P:29.50W PF:0.9830 Lamp Flux:3724.42x1 lm		
NAME: 二代线条灯	TYPE:白色外壳	WEIGHT:
DIM.: 4FT	SPEC.:4000K	SERIAL No.:认证样品
MFR.: YQ	SUR.:1.2*0.066m	PROTECTION ANGLE:

pcc	80%			70%			50%			30%			10%			0
pw	50%	30%	10%	50%	30%	10%	50%	30%	10%	50%	30%	10%	50%	30%	10%	0
pfc	20%			20%			20%			20%			20%			0
RCR	RCR:Room Cavity Ratio Wall Exitance Coefficients(WEC)															
0.0																
1.0	.292	.166	.053	.271	.155	.049	.231	.133	.042	.195	.112	.036	.161	.093	.030	
2.0	.270	.148	.045	.251	.138	.043	.214	.119	.037	.181	.102	.032	.150	.085	.027	
3.0	.248	.132	.040	.231	.124	.037	.198	.107	.033	.167	.092	.028	.139	.077	.024	
4.0	.229	.119	.035	.213	.111	.033	.182	.097	.029	.154	.083	.025	.128	.070	.021	
5.0	.212	.108	.031	.197	.101	.029	.169	.088	.026	.143	.075	.022	.119	.063	.019	
6.0	.197	.099	.028	.183	.092	.027	.157	.081	.023	.133	.069	.020	.110	.058	.017	
7.0	.183	.091	.026	.170	.085	.024	.147	.074	.021	.124	.064	.019	.103	.054	.016	
8.0	.171	.084	.024	.159	.079	.022	.137	.069	.020	.116	.059	.017	.097	.050	.014	
9.0	.160	.078	.022	.150	.073	.020	.129	.064	.018	.109	.055	.016	.091	.046	.013	
10.0	.151	.072	.020	.141	.068	.019	.121	.059	.017	.103	.051	.015	.086	.043	.012	

pcc	80%			70%			50%			30%			10%			0
pw	50%	30%	10%	50%	30%	10%	50%	30%	10%	50%	30%	10%	50%	30%	10%	0
pfc	20%			20%			20%			20%			20%			0
RCR	RCR:Room Cavity Ratio			Ceiling Cavity Exitance Coefficients(CCEC)												
0.0	.549	.549	.549	.469	.469	.469	.320	.320	.320	.184	.184	.184	.059	.059	.059	
1.0	.540	.517	.497	.462	.444	.428	.316	.306	.296	.182	.177	.172	.058	.057	.056	
2.0	.533	.496	.464	.456	.427	.401	.313	.295	.280	.180	.172	.164	.058	.056	.053	
3.0	.526	.480	.443	.451	.414	.384	.310	.287	.269	.179	.168	.159	.057	.055	.052	
4.0	.519	.468	.428	.445	.404	.372	.306	.282	.262	.177	.165	.155	.057	.054	.051	
5.0	.512	.458	.418	.440	.397	.364	.303	.277	.257	.176	.163	.152	.057	.053	.050	
6.0	.506	.451	.411	.435	.390	.358	.300	.273	.253	.174	.161	.151	.056	.053	.050	
7.0	.500	.445	.406	.430	.385	.354	.297	.270	.251	.173	.159	.149	.056	.052	.049	
8.0	.494	.439	.402	.425	.381	.350	.294	.268	.248	.171	.158	.148	.055	.052	.049	
9.0	.489	.435	.399	.421	.377	.348	.292	.265	.247	.170	.157	.147	.055	.051	.049	
10.0	.484	.431	.396	.417	.374	.346	.289	.263	.246	.169	.156	.147	.055	.051	.049	

C Range: 0 - 360DEG
C Interval: 5.0DEG
Test Speed: HIGH
Temperature:26.3DEG
Operators:Ethan
Test Date:2021-10-07

γ Range: 0 - 180DEG
γ Interval: 0.5DEG
Test System:EVERFINE GO-2000B_V1 SYSTEM V2.0.268
Humidity:36%
Test Distance:6.770m [K=1.0000]
Remarks: E款 5:5
源磊A+档

Uncorrected UGR Table

Test:U:121.4V I:0.2470A P:29.50W PF:0.9830 Lamp Flux:3724.42x1 lm											
NAME: 二代线条灯					TYPE:白色外壳			WEIGHT:			
DIM.: 4FT					SPEC.:4000K			SERIAL No.:认证样品			
MFR.: YQ					SUR.:1.2*0.066m			PROTECTION ANGLE:			
ceiling/cavity	0.7	0.7	0.5	0.5	0.3	0.7	0.7	0.5	0.5	0.3	
walls	0.5	0.3	0.5	0.3	0.3	0.5	0.3	0.5	0.3	0.3	
working plane	0.2	0.2	0.2	0.2	0.2	0.2	0.2	0.2	0.2	0.2	
Room dimensions		Viewed crosswise					Viewed endwise				
x = 2H y = 2H	17.5	18.5	18.3	19.3	20.3	18.0	19.0	18.8	19.8	20.8	
	3H	19.0	19.9	19.8	20.7	21.8	19.7	20.5	20.5	21.4	22.5
	4H	19.6	20.4	20.5	21.3	22.4	20.4	21.3	21.3	22.1	23.2
	6H	20.1	20.8	21.0	21.7	22.9	21.1	21.9	22.0	22.7	23.9
	8H	20.2	21.0	21.1	21.9	23.0	21.4	22.1	22.3	23.0	24.1
	12H	20.3	21.0	21.2	21.9	23.1	21.6	22.3	22.5	23.2	24.4
4H	2H	18.1	19.0	19.0	19.8	20.9	18.5	19.3	19.4	20.2	21.3
	3H	19.8	20.5	20.7	21.4	22.6	20.4	21.1	21.3	22.0	23.1
	4H	20.6	21.2	21.5	22.1	23.3	21.3	21.9	22.2	22.8	24.0
	6H	21.2	21.7	22.1	22.7	23.9	22.1	22.6	23.0	23.6	24.8
	8H	21.4	21.9	22.3	22.8	24.1	22.4	22.9	23.4	23.9	25.1
	12H	21.5	22.0	22.5	22.9	24.2	22.7	23.2	23.7	24.2	25.4
8H	4H	20.9	21.4	21.9	22.4	23.6	21.5	22.0	22.5	23.0	24.2
	6H	21.7	22.1	22.7	23.1	24.3	22.5	22.9	23.5	23.9	25.2
	8H	22.0	22.4	23.0	23.4	24.6	23.0	23.4	24.0	24.3	25.6
	12H	22.3	22.6	23.3	23.6	24.9	23.4	23.8	24.4	24.8	26.1
12H	4H	20.9	21.4	21.9	22.3	23.6	21.5	21.9	22.5	22.9	24.2
	6H	21.8	22.2	22.8	23.1	24.4	22.6	22.9	23.6	23.9	25.2
	8H	22.2	22.5	23.2	23.5	24.8	23.1	23.4	24.1	24.4	25.7
Variations with the observer position at spacings:											
S = 1.0H	+ 0.1 / - 0.1					+ 0.1 / - 0.2					
1.5H	+ 0.1 / - 0.1					+ 0.2 / - 0.3					
2.0H	+ 0.2 / - 0.2					+ 0.1 / - 0.4					

CIE Pub.117 Corrected 3724 lm Total Lamp Luminous Flux.(8log(F/F0) = 4.6)

C Range: 0 - 360DEG
C Interval: 5.0DEG
Test Speed: HIGH
Temperature:26.3DEG
Operators:Ethan
Test Date:2021-10-07

γ Range: 0 - 180DEG
γ Interval: 0.5DEG
Test System:EVERFINE GO-2000B_V1 SYSTEM V2.0.268
Humidity:36%
Test Distance:6.770m [K=1.0000]
Remarks: E款 5:5
源磊A+档

UTILIZATION FACTORS TABLE

Test:U:121.4V I:0.2470A P:29.50W PF:0.9830 Lamp Flux:3724.42x1 lm		
NAME: 二代线条灯	TYPE:白色外壳	WEIGHT:
DIM.: 4FT	SPEC.:4000K	SERIAL No.:认证样品
MFR.: YQ	SUR.:1.2*0.066m	PROTECTION ANGLE:

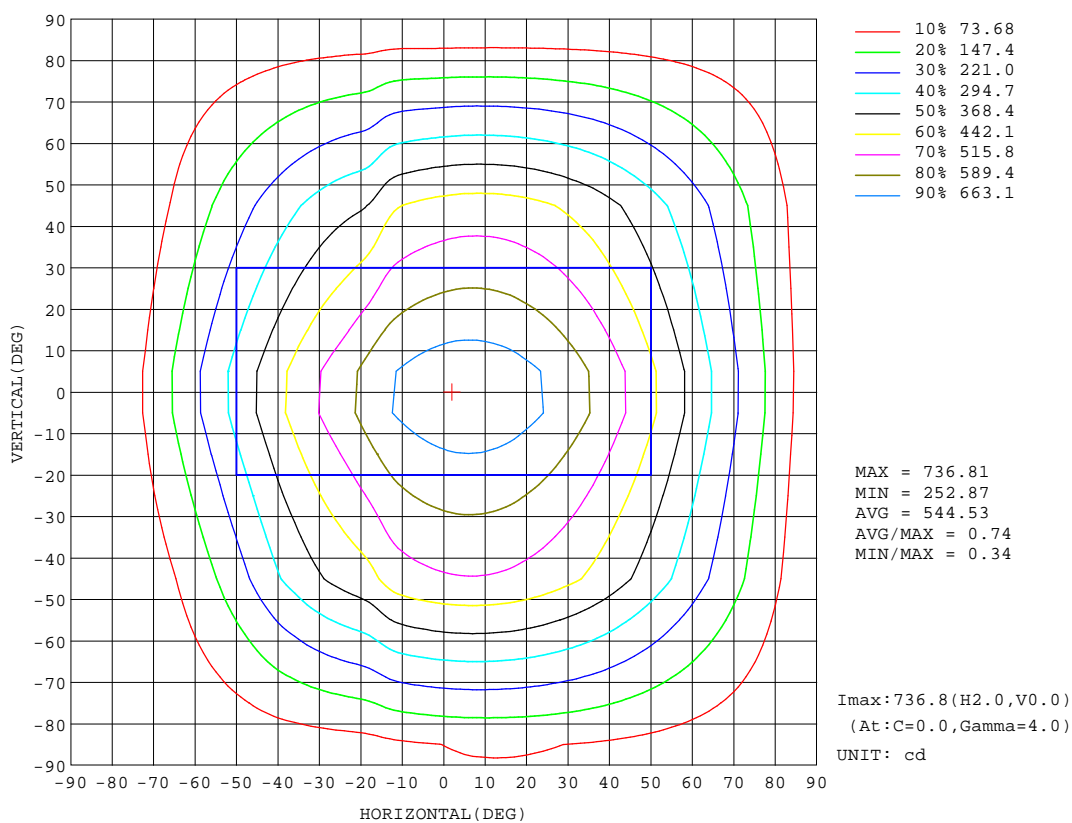
REFLECTANCE										
Ceiling	0.8	0.8	0.8	0.7	0.7	0.7	0.5	0.5	0.5	0
Walls	0.7	0.5	0.3	0.7	0.5	0.3	0.7	0.5	0.3	0
Working plane	0.2	0.2	0.2	0.2	0.2	0.2	0.2	0.2	0.2	0
ROOM INDEX	UTILIZATION FACTORS(PERCENT) $k(RI) \times RCR = 5$									
k = 0.60	44	33	27	42	32	26	38	29	24	17
0.80	54	42	35	51	40	34	45	37	31	21
1.00	62	50	43	58	47	41	51	44	37	26
1.25	68	57	50	64	54	48	56	49	43	30
1.50	74	63	55	69	59	53	60	53	48	32
2.00	81	71	64	75	67	61	65	59	54	36
2.50	85	77	70	79	72	66	68	63	58	39
3.00	89	81	75	82	76	70	71	66	62	41
4.00	93	87	81	86	81	76	74	70	67	43
5.00	96	90	86	89	84	80	76	73	70	45
ROOM INDEX	UF(total)									Direct
According to DIN EN 13032-2 2004			Suspended					SHRNOM = 1.25		

C Range: 0 - 360DEG
 C Interval: 5.0DEG
 Test Speed: HIGH
 Temperature:26.3DEG
 Operators:Ethan
 Test Date:2021-10-07

γ Range: 0 - 180DEG
 γ Interval: 0.5DEG
 Test System:EVERFINE GO-2000B_V1 SYSTEM V2.0.268
 Humidity:36%
 Test Distance:6.770m [K=1.0000]
 Remarks: E款 5:5
 源磊A+档

ISOCANDELA DIAGRAM

Test:U:121.4V I:0.2470A P:29.50W PF:0.9830 Lamp Flux:3724.42x1 lm		
NAME: 二代线条灯	TYPE:白色外壳	WEIGHT:
DIM.: 4FT	SPEC.:4000K	SERIAL No.:认证样品
MFR.: YQ	SUR.:1.2*0.066m	PROTECTION ANGLE:

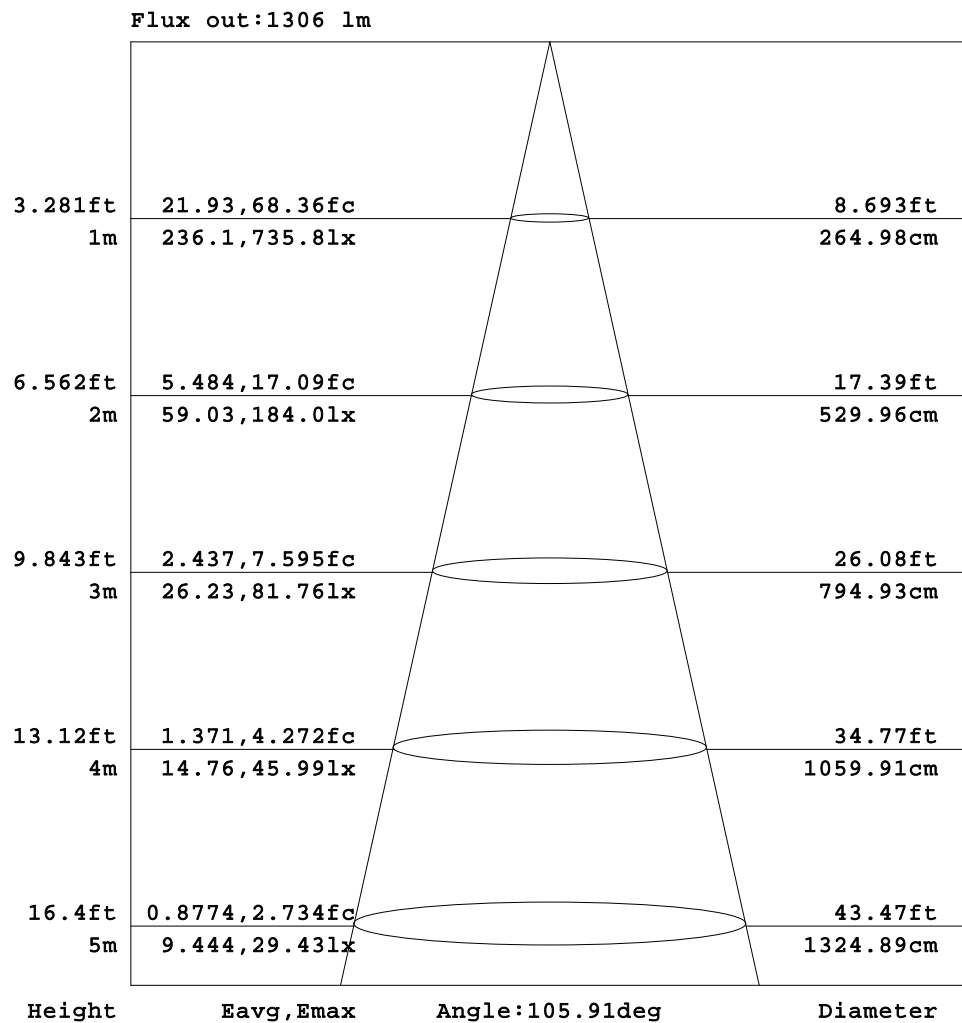


C Range: 0 - 360DEG
C Interval: 5.0DEG
Test Speed: HIGH
Temperature:26.3DEG
Operators:Ethan
Test Date:2021-10-07

γ Range: 0 - 180DEG
 γ Interval: 0.5DEG
Test System:EVERFINE GO-2000B_V1 SYSTEM V2.0.268
Humidity:36%
Test Distance:6.770m [K=1.0000]
Remarks: E款 5:5
源磊A+档

AAI Figure

Test:U:121.4V I:0.2470A P:29.50W PF:0.9830 Lamp Flux:3724.42x1 lm		
NAME: 二代线条灯	TYPE:白色外壳	WEIGHT:
DIM.: 4FT	SPEC.:4000K	SERIAL No.:认证样品
MFR.: YQ	SUR.:1.2*0.066m	PROTECTION ANGLE:



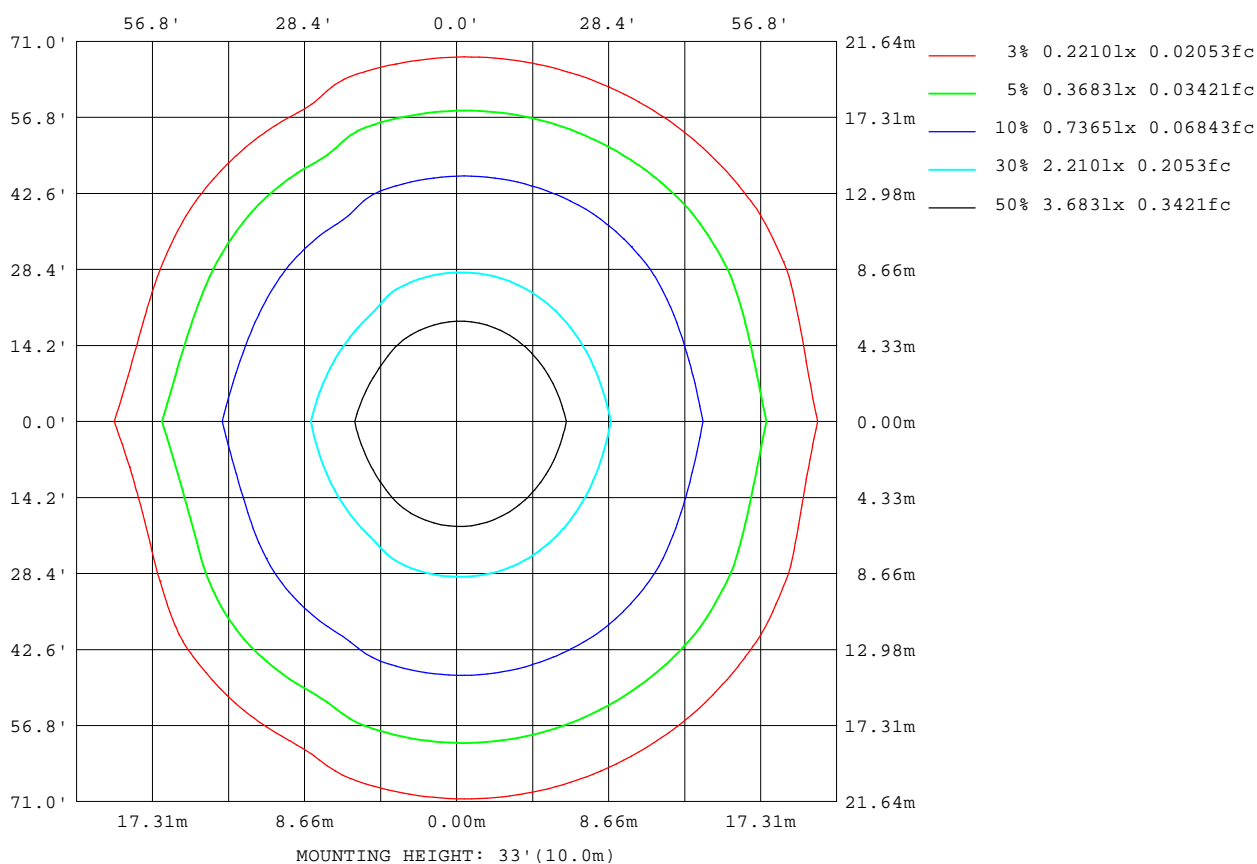
Note:The Curves indicate the illuminated area and the average illumination when the luminaire is at different distance.

C Range: 0 - 360DEG
C Interval: 5.0DEG
Test Speed: HIGH
Temperature:26.3DEG
Operators:Ethan
Test Date:2021-10-07

γ Range: 0 - 180DEG
γ Interval: 0.5DEG
Test System:EVERFINE GO-2000B_V1 SYSTEM V2.0.268
Humidity:36%
Test Distance:6.770m [K=1.0000]
Remarks: E款 5:5
源磊A+档

ISOLUX DIAGRAM

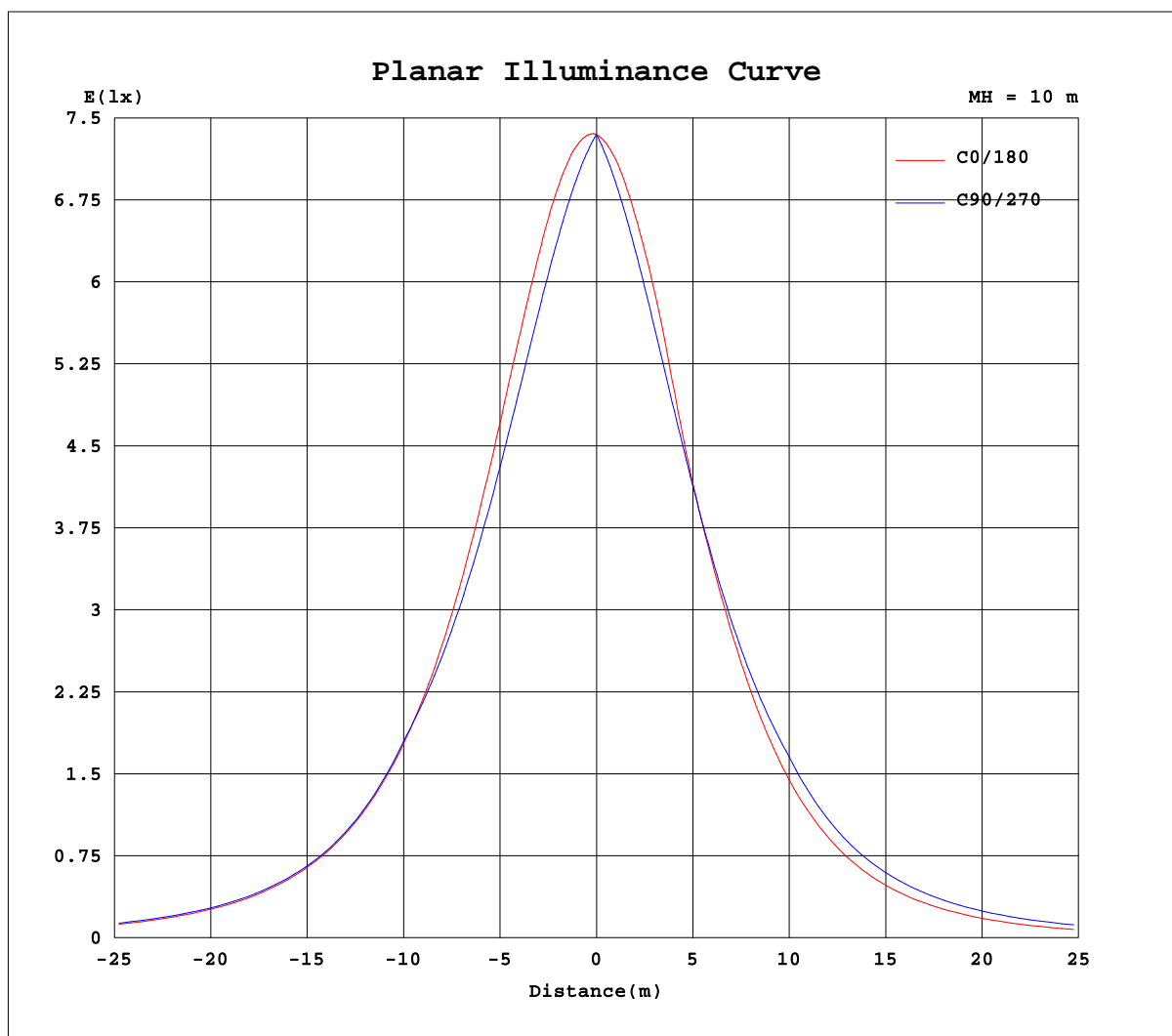
Test:U:121.4V I:0.2470A P:29.50W PF:0.9830 Lamp Flux:3724.42x1 lm		
NAME: 二代线条灯	TYPE:白色外壳	WEIGHT:
DIM.: 4FT	SPEC.:4000K	SERIAL No.:认证样品
MFR.: YQ	SUR.:1.2*0.066m	PROTECTION ANGLE:



C Range: 0 - 360DEG
C Interval: 5.0DEG
Test Speed: HIGH
Temperature:26.3DEG
Operators:Ethan
Test Date:2021-10-07

γ Range: 0 - 180DEG
 γ Interval: 0.5DEG
Test System:EVERFINE GO-2000B_V1 SYSTEM V2.0.268
Humidity:36%
Test Distance:6.770m [K=1.0000]
Remarks: E款 5:5
源磊A+档

Planar Illuminance Curve



C Range: 0 - 360DEG
C Interval: 5.0DEG
Test Speed: HIGH
Temperature: 26.3DEG
Operators: Ethan
Test Date: 2021-10-07

γ Range: 0 - 180DEG
 γ Interval: 0.5DEG
Test System: EVERFINE GO-2000B_V1 SYSTEM V2.0.268
Humidity: 36%
Test Distance: 6.770m [K=1.0000]
Remarks: E款 5:5
源磊A+档

LUMINOUS DISTRIBUTION INTENSITY DATA

Test:U:121.4V I:0.2470A P:29.50W PF:0.9830 Lamp Flux:3724.42x1 lm		
NAME: 二代线条灯	TYPE:白色外壳	WEIGHT:
DIM.: 4FT	SPEC.:4000K	SERIAL No.:认证样品
MFR.: YQ	SUR.:1.2*0.066m	PROTECTION ANGLE:

Table--1

UNIT: cd

C(DEC) γ (DEC)	0	5	10	15	20	25	30	35	40	45	50	55	60	65	70	75	80	85	90
0	735	735	735	735	735	735	735	735	735	735	735	735	735	735	735	735	735	735	735
5	737	734	732	730	728	726	724	723	721	719	718	716	715	714	713	712	711	711	710
10	731	727	723	719	715	711	708	705	703	700	698	695	694	692	690	688	687	686	685
15	717	711	705	700	695	691	687	683	680	677	675	672	670	668	666	665	663	662	660
20	697	689	681	675	669	664	660	657	654	651	649	647	645	643	642	640	639	637	635
25	669	659	651	644	638	633	629	626	624	622	621	620	619	618	617	616	614	612	610
30	635	624	615	607	601	597	594	593	592	591	591	592	591	591	590	589	589	587	585
35	595	583	573	566	561	558	556	556	557	558	560	561	563	565	565	565	564	563	560
40	550	538	528	521	517	516	516	517	521	524	527	531	534	537	539	539	539	538	535
45	503	489	479	473	470	471	473	478	483	489	494	500	505	509	513	514	514	513	510
50	450	435	426	422	421	425	429	437	446	453	462	470	471	469	467	465	462	460	456
55	394	379	371	368	371	377	385	396	407	418	416	415	413	413	411	410	408	405	401
60	336	321	314	315	320	329	342	355	356	356	357	357	357	357	356	355	353	351	347
65	277	263	258	261	271	284	292	293	295	297	299	300	300	301	300	300	298	296	293
70	217	204	203	211	224	228	230	232	235	238	241	243	244	245	245	245	243	241	238
75	159	147	151	163	166	168	171	175	179	182	185	187	189	190	190	190	188	187	184
80	102	93.5	103	105	109	112	116	120	124	127	130	132	134	135	135	135	133	132	129
85	47.9	46.0	49.4	53.6	57.5	61.1	64.5	67.7	70.8	73.5	75.9	77.8	79.1	79.8	80.1	79.7	78.7	77.4	75.1
90	5.39	5.13	6.73	8.50	10.5	12.5	14.7	16.8	18.8	20.6	22.3	23.7	24.7	25.2	25.3	24.9	24.0	22.7	20.7
95	0.79	1.11	8.20	20.7	28.5	34.6	40.1	44.7	49.0	52.8	56.2	59.1	61.4	63.3	64.6	65.3	65.4	65.1	63.8
100	23.1	19.4	27.5	40.9	51.2	59.7	67.7	74.3	80.3	85.8	90.6	94.9	98.6	102	104	106	107	107	107
105	69.4	61.0	63.3	71.0	80.5	90.3	98.7	106	114	120	126	132	136	140	144	147	148	150	150
110	118	106	104	109	117	126	134	142	149	157	163	169	175	180	184	188	190	192	193
115	168	155	150	152	157	165	174	181	188	195	202	208	215	220	225	229	232	235	236
120	221	207	199	198	200	206	214	223	230	236	243	249	256	261	266	270	274	277	280
125	274	259	250	246	246	249	255	262	271	280	285	291	297	303	308	313	316	320	323
130	326	311	301	295	293	294	298	303	310	318	325	334	341	345	350	355	359	363	366
135	378	363	352	345	341	341	342	345	350	356	362	369	376	383	390	395	401	405	409
140	427	413	402	394	389	387	387	388	391	395	400	405	410	416	422	427	431	435	439
145	475	461	451	443	437	433	431	431	432	434	438	441	445	450	454	458	462	466	469
150	519	506	496	488	482	478	475	473	473	474	475	478	480	483	486	489	493	496	499
155	559	549	539	531	525	520	517	514	513	513	512	514	515	517	519	521	523	526	529
160	595	586	578	571	565	561	556	553	551	550	549	549	549	550	551	553	554	556	558
165	624	617	611	605	600	596	592	589	587	585	584	583	583	583	584	584	585	587	588
170	649	644	639	635	631	628	625	623	620	618	617	617	616	615	615	616	616	617	618
175	667	664	662	660	658	656	654	652	651	650	649	648	647	647	647	647	647	647	648
180	678	678	678	678	678	678	678	678	678	678	678	678	678	678	678	678	678	678	678

C Range: 0 - 360DEG
C Interval: 5.0DEG
Test Speed: HIGH
Temperature:26.3DEG
Operators:Ethan
Test Date:2021-10-07

γ Range: 0 - 180DEG
γ Interval: 0.5DEG
Test System:EVERFINE GO-2000B_V1 SYSTEM V2.0.268
Humidity:36%
Test Distance:6.770m [K=1.0000]
Remarks: E款 5:5
源磊A+档

LUMINOUS DISTRIBUTION INTENSITY DATA

Test:U:121.4V I:0.2470A P:29.50W PF:0.9830 Lamp Flux:3724.42x1 lm		
NAME: 二代线条灯	TYPE:白色外壳	WEIGHT:
DIM.: 4FT	SPEC.:4000K	SERIAL No.:认证样品
MFR.: YQ	SUR.:1.2*0.066m	PROTECTION ANGLE:

Table--2

UNIT: cd

C(DEC) γ (DEC)	95	100	105	110	115	120	125	130	135	140	145	150	155	160	165	170	175	180	185
0	735	735	735	735	735	735	735	735	735	735	735	735	735	735	735	735	735	735	735
5	709	709	709	709	709	709	710	710	711	711	712	714	715	717	719	721	723	725	722
10	684	683	683	682	682	682	683	683	684	685	687	688	690	693	696	700	703	708	703
15	658	657	656	655	654	654	653	653	654	654	656	658	660	664	668	672	678	684	676
20	633	631	629	627	626	624	622	621	621	620	619	619	621	623	627	633	640	648	638
25	608	605	602	599	597	593	590	585	578	573	571	569	569	570	574	579	586	595	584
30	582	579	575	571	566	560	550	538	530	525	522	520	521	523	528	534	543	553	540
35	557	553	548	543	536	520	504	494	487	483	479	478	478	479	483	489	498	510	495
40	532	527	521	514	500	477	464	456	449	444	438	434	432	431	434	439	448	461	445
45	506	501	495	485	459	438	429	420	413	404	395	388	383	380	381	385	395	409	392
50	453	449	444	434	409	401	397	387	376	363	351	341	331	324	323	328	338	354	337
55	398	394	389	374	352	348	346	342	337	322	307	289	276	267	265	270	280	298	281
60	344	339	334	315	299	297	294	288	280	273	259	237	221	212	208	212	223	242	225
65	289	284	279	259	248	245	242	235	228	216	201	185	170	159	154	156	166	185	169
70	235	230	224	206	198	195	191	184	177	164	149	135	122	110	104	105	112	129	115
75	180	176	169	154	148	146	142	136	129	117	105	93.2	81.7	70.7	61.0	59.6	62.7	75.3	62.8
80	126	122	115	104	99.2	97.5	94.2	89.8	83.8	75.2	66.9	58.5	50.2	41.7	33.6	23.1	20.9	25.8	19.7
85	71.9	67.6	62.0	53.7	50.3	49.3	47.3	44.9	41.5	37.0	32.9	28.9	25.0	20.8	16.4	8.74	2.18	2.22	2.50
90	17.7	13.6	9.03	4.24	1.59	1.40	0.83	0.55	0.55	0.63	1.14	2.01	3.12	4.46	5.86	8.22	11.0	10.4	20.4
95	61.8	58.7	54.8	46.1	44.5	44.9	44.5	44.7	44.8	44.8	45.7	46.8	48.5	50.5	53.5	57.6	67.6	76.0	53.4
100	106	104	101	88.3	87.3	88.5	88.2	89.1	89.2	89.4	90.6	92.4	94.6	98.2	103	111	110	122	91.8
105	150	149	147	131	130	132	132	134	134	135	136	139	143	148	154	152	155	161	137
110	194	194	193	175	173	176	176	179	180	182	183	187	193	196	194	196	203	225	193
115	238	239	239	221	215	219	222	224	227	229	231	237	238	236	236	240	251	274	245
120	282	283	285	271	257	263	267	268	274	276	281	278	277	277	280	286	298	323	296
125	326	328	330	323	300	305	311	315	319	321	318	317	317	320	326	334	347	372	349
130	370	373	376	376	347	347	353	356	354	356	357	357	359	362	369	380	395	418	398
135	413	416	418	419	398	383	387	389	391	391	394	399	402	407	414	424	437	459	442
140	443	446	448	450	445	424	422	425	425	428	432	436	442	450	460	471	485	508	490
145	473	475	478	480	482	473	461	463	465	466	469	474	481	489	498	510	524	546	531
150	502	505	508	510	513	515	510	502	504	510	512	514	518	526	535	546	559	578	564
155	531	535	537	540	543	546	549	550	547	547	553	560	568	575	582	590	601	620	608
160	561	564	566	569	572	576	579	583	587	591	594	598	603	610	619	629	640	655	645
165	590	593	596	598	601	603	607	611	615	619	624	629	634	640	647	654	661	672	665
170	619	621	623	626	628	630	633	636	639	643	647	651	655	659	664	669	674	682	677
175	649	649	650	652	653	655	657	659	661	663	666	668	670	672	674	677	679	684	681
180	678	678	678	678	678	678	678	678	678	678	678	678	678	678	678	678	678	679	679

C Range: 0 - 360DEG
C Interval: 5.0DEG
Test Speed: HIGH
Temperature:26.3DEG
Operators:Ethan
Test Date:2021-10-07

γ Range: 0 - 180DEG
γ Interval: 0.5DEG
Test System:EVERFINE GO-2000B_V1 SYSTEM V2.0.268
Humidity:36%
Test Distance:6.770m [K=1.0000]
Remarks: E款 5:5
源磊A+档

LUMINOUS DISTRIBUTION INTENSITY DATA

Test:U:121.4V I:0.2470A P:29.50W PF:0.9830 Lamp Flux:3724.42x1 lm		
NAME: 二代线条灯	TYPE:白色外壳	WEIGHT:
DIM.: 4FT	SPEC.:4000K	SERIAL No.:认证样品
MFR.: YQ	SUR.:1.2*0.066m	PROTECTION ANGLE:

Table--3

UNIT: cd

C(DEC) γ (DEC)	190	195	200	205	210	215	220	225	230	235	240	245	250	255	260	265	270	275	280
0	735	735	735	735	735	735	735	735	735	735	735	735	735	735	735	735	735	735	735
5	720	717	715	713	711	710	708	707	706	706	705	705	704	704	704	705	705	706	707
10	698	694	690	686	683	681	679	677	676	675	674	673	673	673	674	675	676	677	678
15	670	664	659	654	651	648	645	643	642	641	641	641	642	642	643	644	646	648	650
20	629	621	616	611	609	608	607	607	607	607	607	608	609	611	612	614	617	619	621
25	574	566	561	557	554	554	555	560	566	570	572	574	577	579	582	584	587	590	592
30	529	520	512	507	503	502	503	505	512	525	536	540	544	547	551	554	557	561	563
35	483	474	467	462	459	457	457	459	463	471	490	505	511	516	520	524	528	532	534
40	433	425	419	415	414	414	416	418	421	425	438	464	478	484	489	494	498	502	505
45	380	372	368	366	367	370	374	378	383	387	391	416	444	452	458	464	469	473	475
50	325	319	316	317	320	325	331	339	345	351	352	362	395	405	409	413	417	421	425
55	270	265	264	267	273	281	290	299	303	306	307	310	338	353	357	361	365	368	372
60	215	212	214	220	228	239	245	251	256	260	263	264	283	302	306	309	313	316	319
65	162	161	166	175	184	191	199	205	211	216	219	220	231	252	255	258	261	264	266
70	110	113	121	131	140	148	155	162	168	172	175	177	183	201	204	206	209	211	213
75	62.3	69.8	81.9	92.3	101	109	116	121	126	130	133	134	137	151	154	155	157	158	160
80	21.6	38.9	51.6	60.5	67.8	73.9	78.7	82.8	86.5	89.0	90.5	91.7	93.0	102	104	103	105	106	107
85	11.8	22.7	30.2	34.6	38.4	41.6	43.9	45.8	47.6	48.6	48.8	49.4	49.5	53.1	53.5	52.0	52.6	53.2	54.2
90	18.7	16.7	14.3	12.1	11.2	10.9	10.3	9.57	9.30	8.65	7.39	7.19	6.32	4.50	3.33	0.67	0.56	0.62	1.02
95	45.7	42.3	42.4	43.6	45.9	48.9	52.5	53.0	52.2	53.0	52.0	51.1	52.8	53.9	52.5	49.7	49.0	48.3	47.8
100	74.7	70.7	73.7	78.2	82.4	89.3	96.3	95.5	95.3	97.8	96.6	94.9	100.0	103	102	98.7	97.4	96.0	94.7
105	119	109	111	117	123	133	143	137	139	143	141	139	148	152	151	148	146	144	142
110	171	160	159	161	171	182	191	181	185	188	186	183	199	202	200	197	194	192	189
115	225	213	208	213	226	238	230	229	233	234	230	228	251	251	249	245	243	239	236
120	277	266	264	269	281	288	274	276	283	279	274	277	303	300	298	294	291	287	284
125	333	323	319	322	323	315	321	331	330	325	318	332	353	350	347	343	339	335	332
130	384	374	369	361	357	359	364	369	369	367	365	393	403	399	396	392	388	384	380
135	428	418	409	405	401	404	404	403	401	400	414	443	444	444	442	440	436	431	426
140	476	464	455	450	447	443	439	437	437	442	464	474	472	472	469	467	463	459	454
145	518	507	497	490	483	479	476	477	480	493	503	502	501	499	497	494	490	486	482
150	553	542	534	527	524	523	521	523	530	534	532	530	528	526	523	521	517	513	510
155	598	591	583	576	571	568	568	569	566	563	560	558	555	552	550	547	544	541	538
160	636	628	621	616	611	606	602	598	593	590	588	585	581	579	576	574	571	569	566
165	659	652	647	641	635	631	626	623	620	616	613	610	607	605	603	600	598	596	594
170	673	668	664	660	656	652	649	645	642	639	637	634	632	630	629	627	625	624	623
175	679	677	674	672	670	668	666	664	662	661	659	658	656	655	654	653	652	651	651
180	679	679	679	679	679	679	679	679	679	679	679	679	679	679	679	679	679	679	679

C Range: 0 - 360DEG
C Interval: 5.0DEG
Test Speed: HIGH
Temperature:26.3DEG
Operators:Ethan
Test Date:2021-10-07

γ Range: 0 - 180DEG
γ Interval: 0.5DEG
Test System:EVERFINE GO-2000B_V1 SYSTEM V2.0.268
Humidity:36%
Test Distance:6.770m [K=1.0000]
Remarks: E款 5:5
源磊A+档

LUMINOUS DISTRIBUTION INTENSITY DATA

Test:U:121.4V I:0.2470A P:29.50W PF:0.9830 Lamp Flux:3724.42x1 lm		
NAME: 二代线条灯	TYPE:白色外壳	WEIGHT:
DIM.: 4FT	SPEC.:4000K	SERIAL No.:认证样品
MFR.: YQ	SUR.:1.2*0.066m	PROTECTION ANGLE:

Table--4

UNIT: cd

C(°) γ (°)	285	290	295	300	305	310	315	320	325	330	335	340	345	350	355				
0	735	735	735	735	735	735	735	735	735	735	735	735	735	735	735				
5	708	709	710	711	713	714	716	718	720	722	724	727	729	732	734				
10	680	682	683	686	688	691	694	697	700	704	708	712	716	721	726				
15	652	654	656	659	661	665	668	672	676	681	686	691	697	703	710				
20	623	625	628	631	633	636	640	643	647	652	657	664	671	679	687				
25	594	596	599	601	603	606	608	611	616	620	626	632	640	648	658				
30	565	567	569	570	572	573	576	578	581	584	589	595	602	611	622				
35	536	537	539	539	540	540	541	542	543	545	549	554	561	570	581				
40	507	508	508	508	507	506	505	504	504	504	506	510	516	525	536				
45	477	478	477	476	474	472	469	466	464	462	461	463	468	476	488				
50	429	433	437	441	442	437	433	428	422	418	416	415	417	423	434				
55	376	379	382	385	388	392	396	389	381	374	369	365	365	369	378				
60	322	325	328	330	332	335	337	339	341	331	322	316	312	313	321				
65	269	271	273	275	277	279	279	280	282	283	278	268	261	258	263				
70	215	217	219	220	222	223	223	223	223	224	225	224	212	205	206				
75	162	164	165	166	168	168	168	168	168	167	167	168	168	156	151				
80	108	110	111	112	114	114	114	114	114	114	113	112	112	112	99.6				
85	55.0	56.2	57.4	58.7	60.1	61.0	61.8	62.4	62.8	63.0	62.9	62.4	61.6	59.8	58.2				
90	1.50	2.53	3.75	5.14	6.66	8.13	9.58	11.0	12.3	13.6	14.7	15.8	16.7	17.6	18.3				
95	47.3	47.0	46.7	46.4	46.0	45.4	44.4	43.1	41.3	38.8	35.0	30.0	21.7	8.62	2.04				
100	93.1	91.6	89.9	88.0	85.9	83.2	80.1	76.4	71.8	66.2	58.7	49.5	36.9	18.0	13.7				
105	139	137	134	130	127	122	117	112	105	97.8	88.6	77.5	65.1	56.6	54.8				
110	185	182	178	173	169	163	157	150	143	134	125	114	104	99.3	101				
115	232	228	223	218	212	206	199	192	184	176	166	156	149	146	151				
120	279	274	269	263	257	251	244	237	230	218	207	200	196	196	202				
125	327	322	316	311	304	298	292	281	269	259	251	246	245	247	255				
130	375	370	365	359	351	341	330	320	311	303	297	294	295	299	308				
135	419	412	403	395	386	377	368	360	353	347	344	343	345	351	360				
140	448	442	435	428	420	413	406	400	395	392	391	391	395	401	411				
145	477	471	466	460	455	450	445	441	438	436	437	439	443	449	459				
150	506	502	497	493	489	486	483	481	480	480	481	484	489	496	505				
155	535	532	529	526	524	522	521	520	520	521	524	527	533	539	547				
160	564	562	560	558	557	557	556	557	558	560	564	567	572	578	586				
165	593	592	591	590	590	590	590	591	593	596	599	602	606	611	617				
170	622	621	621	621	621	622	623	624	626	628	630	633	636	640	644				
175	651	651	651	651	651	652	652	653	654	656	657	659	661	663	665				
180	679	679	679	679	679	679	679	679	679	679	679	679	679	679	679				

C Range: 0 - 360DEG
C Interval: 5.0DEG
Test Speed: HIGH
Temperature:26.3DEG
Operators:Ethan
Test Date:2021-10-07

γ Range: 0 - 180DEG
γ Interval: 0.5DEG
Test System:EVERFINE GO-2000B_V1 SYSTEM V2.0.268
Humidity:36%
Test Distance:6.770m [K=1.0000]
Remarks: E款 5:5
源磊A+档